

- NOTES**
1. ALL BEARINGS ARE GRID, BASED ON THE 3' MODIFIED TRANSVERSE MERCATOR SYSTEM, CENTRAL MERIDIAN 64°30' WEST LONGITUDE, AND WERE DERIVED FROM G.P.S. OBSERVATIONS REFERENCED FROM NOVA SCOTIA COORDINATE MONUMENT NUMBERS 210312.
  2. CONTROL TRAVERSE WAS NOT ADJUSTED AND SCALE FACTOR WAS NOT APPLIED.
  3. FIELD SURVEYS WERE CARRIED OUT BETWEEN AUGUST 30, 2006 AND FEBRUARY 19, 2010.

- SYMBOL LEGEND:**
- ..... PERIMETER OF LANDS DEALT WITH BY THIS PLAN
  - ⊙ S.M., ⊠ W.P. .... SURVEY MARKER, WOOD POST
  - ⊠ I.B., ⊙ I.P. .... IRON BAR, IRON PIPE
  - △ N.S.C.M. .... NOVA SCOTIA CO-ORDINATE MONUMENT
  - Fd. .... FOUND
  - ⊕ ..... CENTRELINE
  - (T/L) ..... TIE LINE
  - WIT. .... WITNESS
  - O.H.W.M. .... ORDINARY HIGH WATER MARK
  - Bk., Pg. .... BOOK, PAGE
  - P.R. .... PLAN REFERENCE
  - (D),(P),(M),(C) .... DEED, PLAN, MEASURED, CALCULATED
  - R., L., C. .... RADIUS, LENGTH OF CURVE, CHORD
  - P.C. .... POINT OF CURVATURE
  - P.R.C. .... POINT OF REVERSE CURVATURE
  - L.I. .... LAND INFORMATION SERVICE
  - ..... PROPERTY IDENTIFIER NUMBER
  - N.S.D.T.P.W. .... NOVA SCOTIA DEPT. OF TRANSPORTATION & PUBLIC WORKS
  - C1, L1 ..... CURVE LABEL, LINE LABEL

**Surveyor's Certificate**

I, Joseph R. Alcorn, Nova Scotia Land Surveyor, hereby certify that the survey represented by this plan was conducted under my supervision, and that the survey and plan were made in accordance with the Nova Scotia Land Surveyors Act and the regulations made thereunder.

Dated this 24th day of February AD, 2010.

..... N.S.L.S.

**CURVE TABLE**

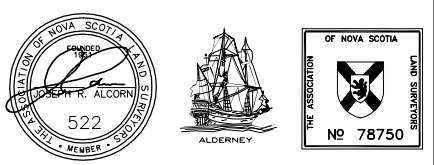
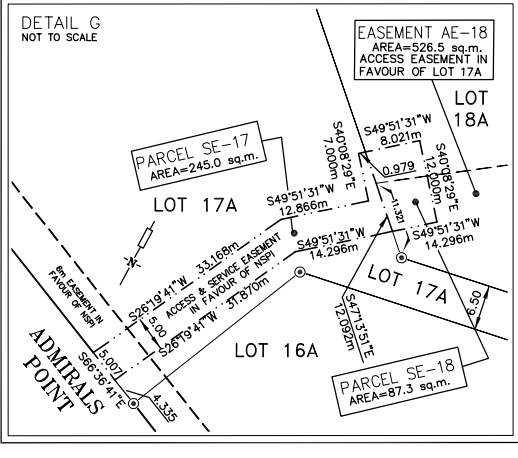
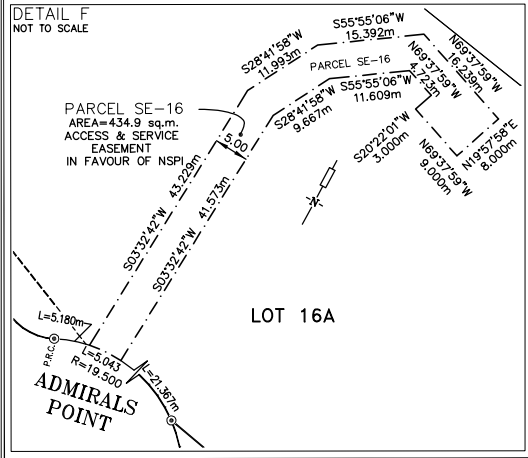
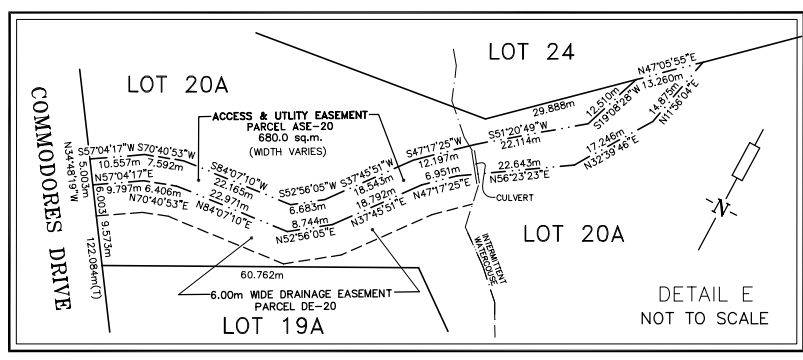
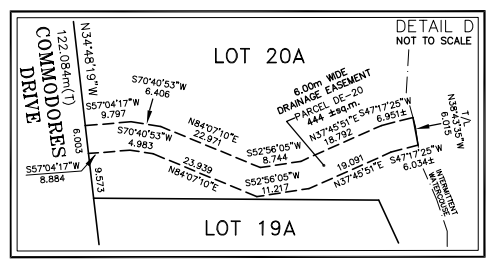
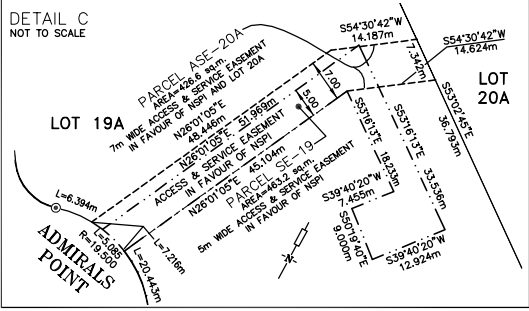
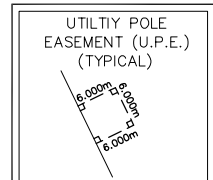
CURVE	RADIUS	LENGTH	DIRECTION	CHORD
C1	160.000	15.260	N37°32'15"W	15.254
C2	19.500	34.053	N56°01'38"W	29.888
C3	19.500	20.328	N23°51'47"E	19.418
C4	19.500	31.590	N68°50'49"W	28.247

**TABLE OF CO-ORDINATES**

MONUMENT	NORTHING(m.)	EASTING(m.)
210312	4 930 664.779	5 535 867.998

1979 VALUES

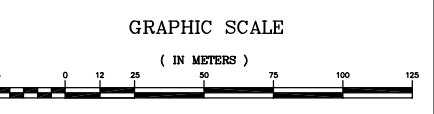
- PLAN REFERENCES:**
1. PLAN SHOWING PROPERTY OF M & M DEVELOPMENTS LIMITED; BY RONALD G. WENTZELL, N.S.L.S.; DATED JANUARY 7, 1982;
  2. PLAN OF SURVEY SHOWING LOTS 1, 2 & 3; LAND CONVEYED TO RUBEN JOHN GILLAM; BY GARRY S. PARKER, N.S.L.S.; DATED FEBRUARY 17, 1999.
  3. PLAN OF SURVEY OF LOT LB-1 & PARCEL A, LANDS OF 3201054 NOVA SCOTIA LIMITED AND PARCELS Y & Z, LANDS OF HER MAJESTY THE QUEEN, etc., SIGNED BY JOSEPH R. ALCORN, N.S.L.S.; DATED JANUARY 21, 2007; ALDERNEY SURVEYS LTD. PLAN NO. 065642-1B.
  4. PLAN OF SURVEY OF LOTS 1 TO 14, 16 TO 23 INCL., PARCELS P-1, CD-1, AP-1 & CW-1, A SUBDIVISION OF LOT LB-1 & PARCELS A, Y & Z, LANDS OF OCEAN POINT ESTATES LTD. SIGNED BY JOSEPH R. ALCORN, N.S.L.S.; DATED SEPTEMBER 17, 2006; ALDERNEY SURVEYS LTD. PLAN NO. 065642-1D.



**ALDERNEY SURVEYS LIMITED**  
 Nova Scotia Land Surveyors & Professional Engineers  
 327 Prince Albert Road, Dartmouth, Nova Scotia  
 Tel: 465-7300 Fax: 465-4834 aldsurveys@eastlink.ca

**OCEAN POINT ESTATES**

PLAN OF SUBDIVISION AND CONSOLIDATION  
 LOTS 16A TO 20A Inclusive.  
 22A & LOT 24  
 A SUBDIVISION OF  
 PARCEL R-1, LOTS 16-20 INCL.  
 & LOT 22  
 LANDS OF  
 OCEAN POINT ESTATES LTD.  
 COMMODORES DRIVE, ADMIRALS POINT & CAPTAINS WAY  
 329 HIGHWAY, ASPOTOGAN, LUNenburg COUNTY



1 : 1250  
 DWG. No. 097305-1  
 DRAWN BY: N.L.S. DATE: FEBRUARY 24, 2010