

SYMBOL LEGEND:

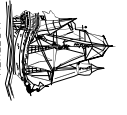
- PERIMETER OF LANDS DEALT WITH BY THIS PLAN
- SM, WP SURVEY MARKER, WOOD POST
- OB, O I.P. IRON BAR, IRON PIPE
- NSCM NOVA SCOTIA CO-GRADUATE MONUMENT
- RD ROUND
- CL CENTRELINE
- (T/L) THE LINE
- WT WITNESS
- OH.W.M. ORDINARY HIGH WATER MARK
- BK, PG BOOK, PAGE
- P.R. PLAN REFERENCE
- (D),(P),(M),(C) DEED, PLAN, MEASURED, CALCULATED
- R, L, C RADIUS, LENGTH OF CURVE, CHORD
- P.C. POINT OF CURVATURE
- P.O.P. POINT OF REVERSE CURVATURE
- P.R.C. POINT OF RADIUS CURVATURE
- P.I.D. PROPERTY IDENTIFIER NUMBER
- NS.D.I.P.W. NOVA SCOTIA DEPT. OF TRANSPORTATION & PUBLIC WORKS
- C1, L1 CURVE LABEL, LINE LABEL

LINE TABLE

LINE	LENGTH	BEARING
L1	28.784m	N57°49'07"W
L2	40.389m	N57°49'07"W
L3	3.370m	N71°46'28"W

CURVE TABLE

CURVE	RADIUS	LENGTH	DIRECTION	CHORD
C1	97.959	19.239	N70°53'11"W	19.208
C2	97.843	17.753	N72°42'05"W	17.715
C3	97.225	19.498	S63°33'50"E	19.465
C4	140.000	29.778	N61°24'40"W	29.672
C5	140.000	50.147	N45°03'59"W	49.879
C6	19.500	31.131	S60°52'25"E	27.929
C7	19.500	34.053	N63°01'54"E	29.488
C8	19.500	27.677	S68°27'36"E	25.412
C9	19.500	12.198	N62°47'32"E	12.000
C10	19.500	22.903	N01°13'03"E	21.613
C11	19.500	6.632m	N12°41'58"W	6.600m
C12	19.500	31.990	N69°50'49"W	29.241
C13	160.000	15.280	N37°32'15"W	15.254



ALDERNEY SURVEYS LIMITED
 Nova Scotia Land Surveyors and Professional Engineers
 2777 Prince Albert Road, Lunenburg, Nova Scotia
 Tel: 465-7300 Fax: 465-4854
 alderney@alderney.ca

OCEAN POINT ESTATES

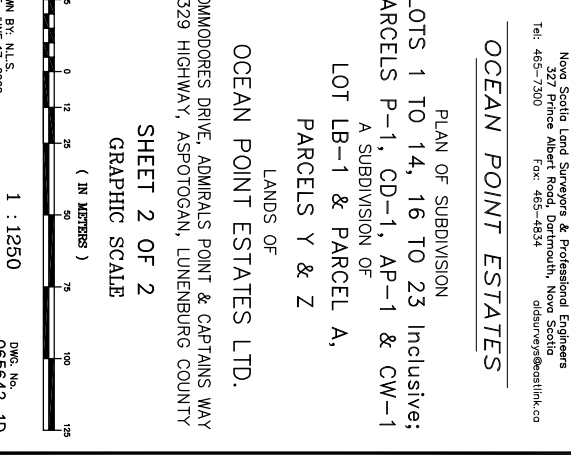
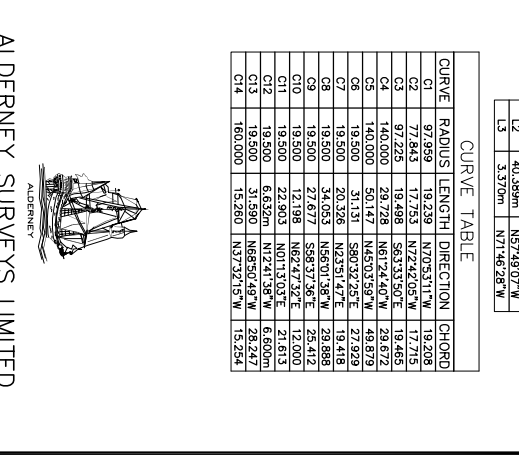
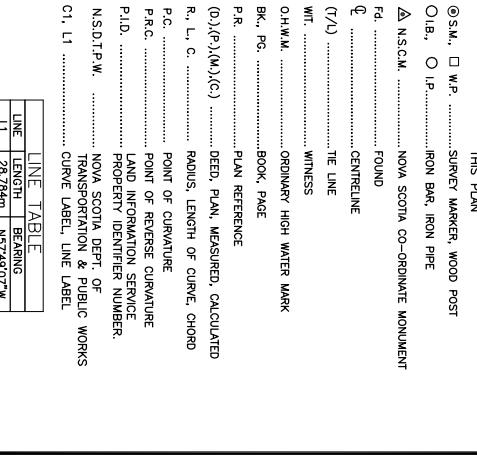
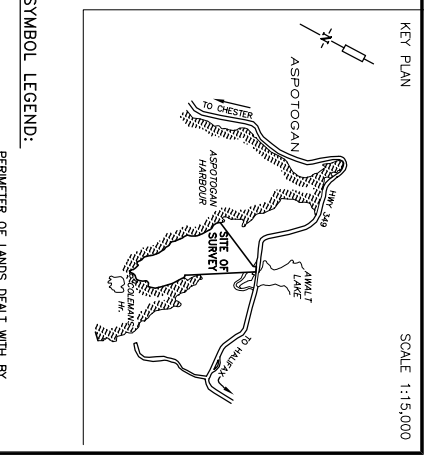
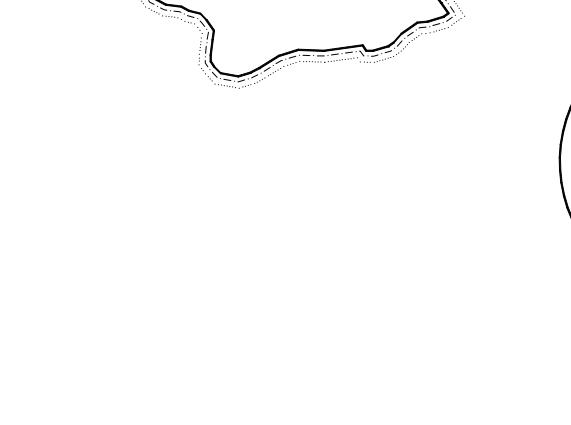
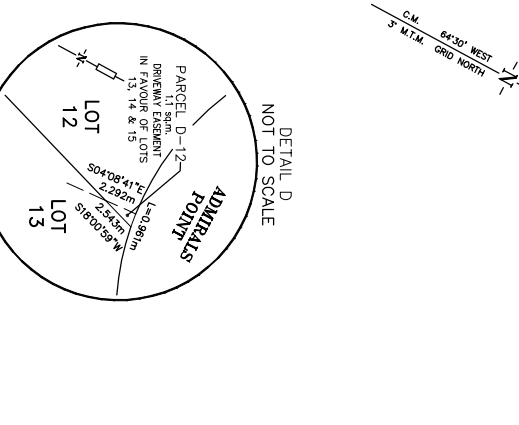
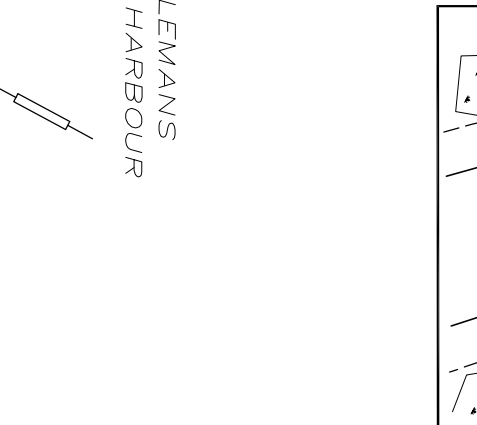
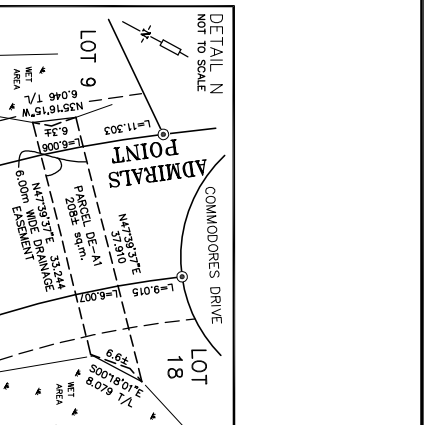
PLAN OF SUBDIVISION
 LOTS 1 TO 14, 16 TO 23 Inclusive;
 PARCELS P-1, CD-1, AP-1 & CW-1
 A SUBDIVISION OF
 LOT LB-1 & PARCEL A,
 PARCELS Y & Z

LANDS OF
OCEAN POINT ESTATES LTD.
 COMMODORES DRIVE, ADMIRALS POINT & CAPTAINS WAY
 329 HIGHWAY, ASPOTOGAN, LUNENBURG COUNTY

SHEET 2 OF 2
 GRAPHIC SCALE



DRAWN BY: N.L.S.
 DATE: JUNE 17, 2008
 1 : 1250
 PNC No. 065642-1D



DETAIL H: Close-up of the boundary between Lot 17 and Lot 16, showing the Commodores Drive easement.

DETAIL F: Close-up of the boundary between Lot 16 and Lot 14, showing the Admirals Point easement.

DETAIL E: Close-up of the boundary between Lot 11 and Lot 10, showing the Admirals Point easement.

DETAIL K: Close-up of the boundary between Lot 18 and Lot 17, showing the Commodores Drive easement.

DETAIL L: Close-up of the boundary between Lot 15 and Lot 14, showing the Commodores Drive easement.